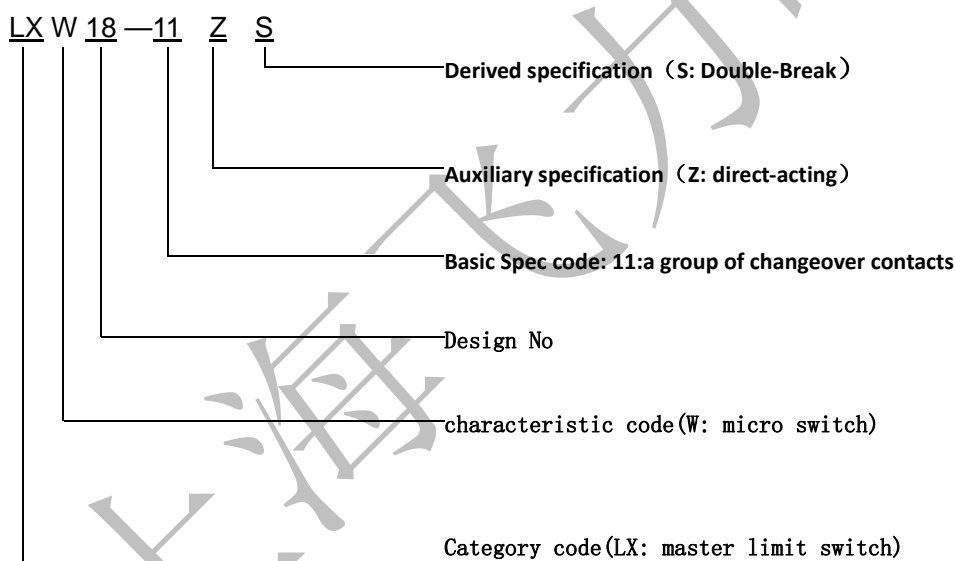
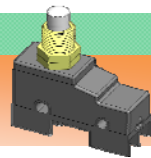


●Features &Application

- ◆Quick & Reliable action, high precision, long life
- ◆Different contact material like Silver alloy, silver or gold plated for different electrical load application
- ◆Variety of quick connect terminals, for customer flexibly selection.
- ◆change-over, double gap, contact element with four terminals, Contact element forms: Zb, electrically separated, Mixed voltage can be used
- ◆Variety of auxiliary driving forms, also can be customized according to customer' s need to meet different occasions.
- ◆Applicable to the control circuit with AC 250V, DC 250V, used as parts for master electrical appliances or alternative appliances.
- ◆This product is widely used in home appliance, machine tool, power electronic and automation application **As an electromagnet or inductive load control.**

●instruction for code





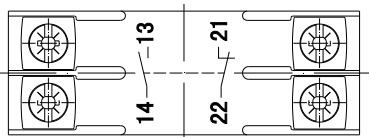
●Technical Specification

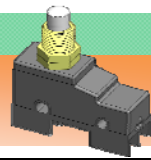
item	characteristic			
Utilization Category	AC-12	AC-15	DC-13	
Ui	250V			
Ith	10A			
Ue	250V	250V	250V	
Ie	10A	1. 5A	0. 3A	
contact resistance	≤30m Ω			
power frequency withstand voltage	Electrically charged parts of the switching element		AC1500V±3% 45~65Hz 5s	
	Between current-carrying components and surface easy to touch		AC1500V±3% 45~65Hz 5s	
	between current-carrying metal parts and the ground		AC1500V±3% 45~65Hz 5s	
mechanical life	≥300, 000 operations			
electrical life	≥100, 000 operations			
Ambient operating temperature	-5℃~40℃			
IP level	IP00			

★For more details, please contact our account manager

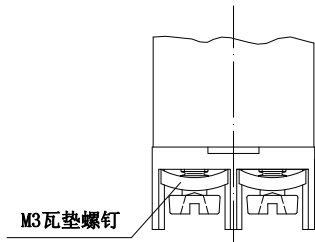
●contact form

◆11changeover



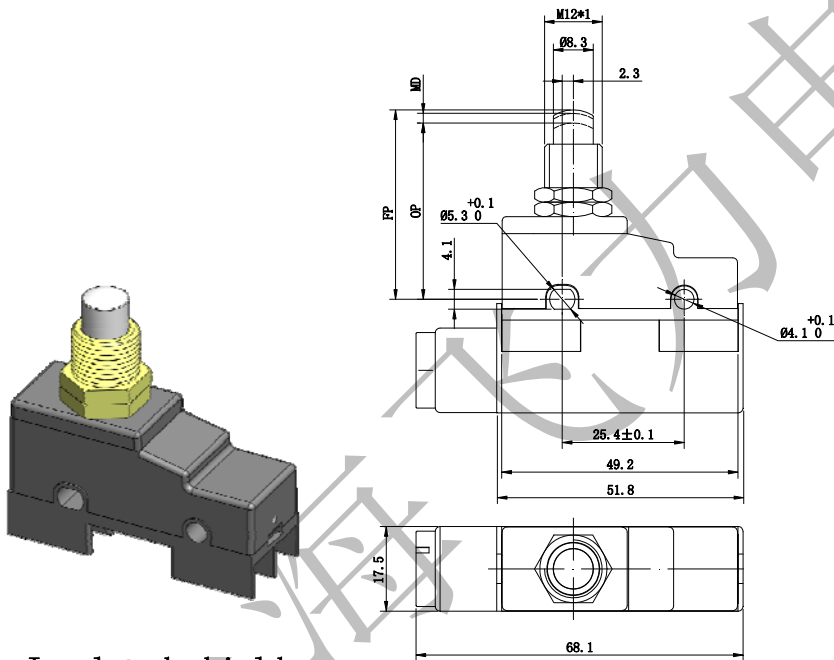


●terminal



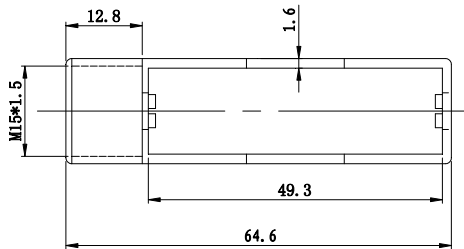
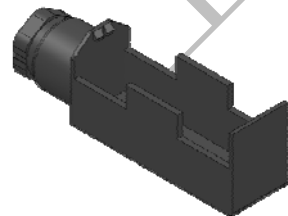
★For more details, please contact our account manager

●Dimensions and operating Characteristics



Type	
Operating Characteristics	LXW18-11ZS
OF: (N)	4.5~6.5
RF: (N)	≥1.5
FP:(mm)	<40.5
OP: (mm)	38±0.8
MD: (mm)	≤2
OT: (mm)	≥1.5

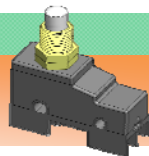
Insulated shield:



★For more details,please contact our account manager

订购电话: 021-59585666 传真: 021-69968999 邮箱: webmaster@shfeili.com 网址: www.shfeili.com QQ: 2660186152

订购事项: 本选型手册所记载的各项产品设计规格参数仅供选型时参考, 由于各种原因可能会未经通知进行变更, 购买时请即时联络客户经理, 获取针对具体型号发布的最新技术规格作为唯一的设计依据



●precautions for correct use

Please read this page carefully before use, common precaution please refer to relevant pages in 《Summary》

◆ Mounting

Use M4 mounting screws with plane washers or spring washers

To securely mount the Switch. Tighten the screws to a torque of 0.7 to 1.2 N·m.

◆insulation distance

Please use insulating shields or partition to keep safe insulating distance if it failed to secure insulating distance required.