

ZTF 型阻尼弹簧隔振器

ZTF damp spring vibration ab sorber

ZTF 型阻尼弹簧隔振器是本公司最近开发的一种新型隔振器，它是参照国内外空调行业隔振器的最新设计，由合金弹簧、上下铁构件、橡胶阻尼套、底座橡胶摩擦垫组成。最大特点是隔振效率显著，结构简单，安装方便，是一种无外壳式钢弹簧隔振器。根据计算机优化设计，合金弹簧应保证足够的安全工作压力，每只隔振器的竖向刚度达到设计标准要求。

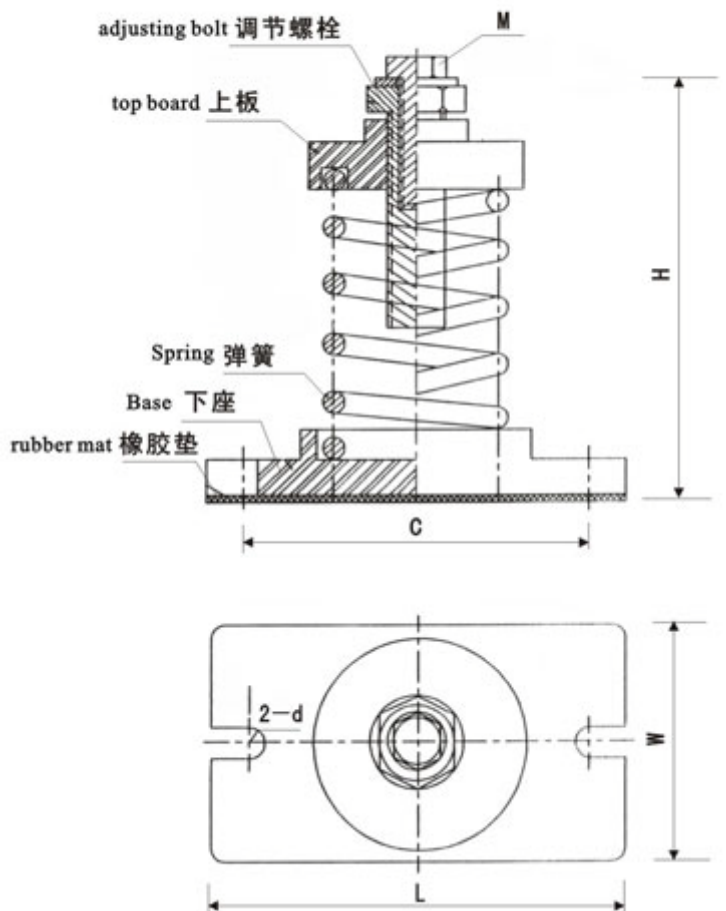
ZTF damp spring vibration absorber is a new type vibration absorber developed recently referring to the latest design of vibration absorber in air—conditioning industry both at home and broad. It is composed of alloy spring, top and boyyom iron component, rubber damp cover and base rubber friction mat. The most notable characteristic of the products are distinct vibration absorbing efficiency, simple structure, convenient installation and Steel SPring vibration ab SO rb e r withOUt Shell. According to computer optimal design, alloy spring can ensure enough safety for work pressure. Vertical rigidity of each vibration absorber meets the designing standard.

ZTF 型阻尼弹簧隔振器技术参数表:

Techn010gical parameter table ofthe ZTF damp spring vibration absorber:

| 型号 Type | 最佳荷载 (N) | 荷载范围 (N) | 竖向刚度 N/mm | 外形尺寸及安装孔 (mm) dimension of figuration and installation | 安装螺栓 (M) |
|------------|-------------|-------------|--------------|---|-------------|
|------------|-------------|-------------|--------------|---|-------------|

ZTF 型阻尼弹簧隔振器简图:
Diagram of the ZTF damp spring vibration absorber:



| | optimal load (N) | scope of load (N) | vertical rigidity N/mm | hole | | | | | installation bolt |
|----------|---------------------|----------------------|------------------------------|------|-----|-----|-----|------|----------------------|
| | | | | L | W | C | H | d | |
| ZTF-10 | 100 | 67-133 | 7.6 | 90 | 55 | 70 | 65 | 8.5 | 10 |
| ZTF-16 | 160 | 107-213 | 9 | 90 | 55 | 70 | 65 | 8.5 | 10 |
| ZTF-25 | 250 | 167-333 | 11 | 90 | 55 | 70 | 65 | 8.5 | 10 |
| ZTF-42 | 420 | 280-560 | 14 | 90 | 55 | 70 | 65 | 8.5 | 10 |
| ZTF-65 | 650 | 433-867 | 22 | 105 | 70 | 80 | 100 | 10.5 | 12 |
| ZTF-85 | 850 | 567-1133 | 32 | 105 | 70 | 80 | 100 | 10.5 | 12 |
| ZTF-115 | 1150 | 767-1533 | 44 | 105 | 70 | 80 | 100 | 10.5 | 12 |
| ZTF-160 | 1600 | 1067-2133 | 46 | 105 | 70 | 80 | 100 | 10.5 | 12 |
| ZTF-210 | 2100 | 1400-2800 | 60 | 155 | 95 | 125 | 165 | 12.5 | 14 |
| ZTF-260 | 2600 | 1733-3467 | 65 | 155 | 95 | 125 | 165 | 12.5 | 14 |
| ZTF-330 | 3300 | 2200-4400 | 75 | 155 | 95 | 125 | 165 | 12.5 | 14 |
| ZTF-450 | 4500 | 3000-6000 | 135 | 155 | 95 | 125 | 165 | 12.5 | 14 |
| ZTF-680 | 6800 | 4533-9066 | 180 | 180 | 110 | 140 | 180 | 14.5 | 16 |
| ZTF-980 | 9800 | 6533-13067 | 220 | 180 | 110 | 140 | 180 | 14.5 | 16 |
| ZTF-1200 | 12000 | 8000-16000 | 300 | 180 | 110 | 140 | 180 | 14.5 | 16 |
| ZTF-1500 | 15000 | 10000-20000 | 420 | 180 | 110 | 140 | 180 | 14.5 | 16 |
| ZTF-2000 | 20000 | 13333-26666 | 550 | 200 | 120 | 150 | 200 | 14.5 | 18 |
| ZTF-2800 | 28000 | 18667-37333 | 650 | 200 | 120 | 150 | 200 | 14.5 | 18 |