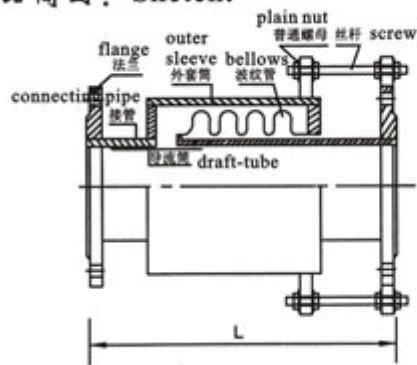


BW-WY 型外压轴向型波纹补偿器

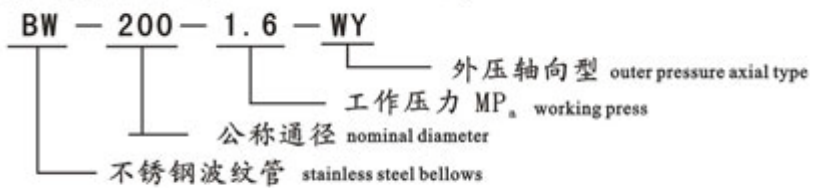
BW-WY outer-pressure axial corrugated compensator

BW-WY 型外压轴型波纹补偿器由承受One side of the bellows of the compensator is connected with the outer
外压的波纹管两端分别与外套管与内接 pipe and inner pipe while the other side with the flange. The compens-
管和法兰相连，组成只用于吸收轴向位 ator is used to absorb axial displacement but cannot bear the pull or
移而不能承受波纹管压力推力的膨胀 thrust of the bellows. Inner draft-tube can also be installed as long
节。可设置内筒导流，方向需与流向一 as it is consistent with the direction of the current. The small rod is
致，产品上的小拉杆不是承力构件，当 not load-bearing components and it should be noted when used as
需要作为限位时需注明。 restrictor.

产品简图：Sketch:



完整标记示例：full mark example



BW-WY型 外压轴向式 长度可定制
outer pressure axial type customer length

技术特性表： technical characteristics table

| 公称通径 mm nominal diameter | 长度 mm length | 波级管有效面积 cm2 effective area of bellows | 轴向补偿量 ±mm/ 刚度 N/mm axial compensation ±mm/rigidity N/mm | | | | | |
|-----------------------------------|-----------------|--|--|------|--------|------|--------|------|
| | | | 1.0mpa | | 1.6mpa | | 2.5mpa | |
| 40 | 280 | 21 | 13 | 250 | 11 | 287 | 11 | 287 |
| 50 | 280 | 41 | 14 | 260 | 12 | 290 | 12 | 290 |
| 65 | 300 | 61 | 16 | 280 | 14 | 310 | 14 | 310 |
| 80 | 340 | 82 | 28 | 400 | 24 | 480 | 24 | 480 |
| 100 | 380 | 125 | 35 | 420 | 30 | 510 | 30 | 510 |
| 125 | 400 | 180 | 45 | 480 | 40 | 570 | 40 | 570 |
| 150 | 450 | 255 | 55 | 590 | 48 | 660 | 46 | 680 |
| 200 | 550 | 480 | 60 | 820 | 52 | 925 | 50 | 1060 |
| 250 | 600 | 730 | 65 | 1400 | 55 | 1600 | 52 | 1750 |
| 300 | 600 | 1020 | 65 | 1500 | 55 | 1710 | 52 | 1860 |
| 350 | 650 | 1280 | 70 | 1680 | 60 | 1880 | 55 | 2100 |

| | | | | | | | | |
|------|------|-------|----|------|----|------|----|------|
| 400 | 650 | 1580 | 70 | 1750 | 58 | 2100 | 53 | 2360 |
| 450 | 700 | 1980 | 85 | 1900 | 70 | 2460 | 65 | 2750 |
| 500 | 700 | 2450 | 90 | 2100 | 75 | 2675 | 70 | 2945 |
| 600 | 700 | 3450 | 80 | 2300 | 65 | 3050 | 60 | 3350 |
| 700 | 750 | 4740 | 80 | 2500 | 65 | 3200 | 60 | 3510 |
| 800 | 750 | 5960 | 80 | 2700 | 65 | 3460 | 60 | 3810 |
| 900 | 800 | 7560 | 80 | 3500 | 65 | 3910 | 60 | 4155 |
| 1000 | 800 | 9280 | 80 | 3800 | 65 | 4180 | 60 | 4410 |
| 1100 | 800 | 10816 | 80 | 4350 | 65 | 4680 | 60 | 4810 |
| 1200 | 850 | 13010 | 80 | 4510 | 65 | 4880 | 60 | 5120 |
| 1300 | 850 | 14800 | 80 | 4795 | 65 | 5210 | 60 | 5460 |
| 1400 | 900 | 16510 | 80 | 5300 | 65 | 5620 | 60 | 5930 |
| 1500 | 900 | 18900 | 80 | 5500 | 65 | 5980 | 60 | 6120 |
| 1600 | 1000 | 21920 | 80 | 5800 | 65 | 6180 | 60 | 6480 |