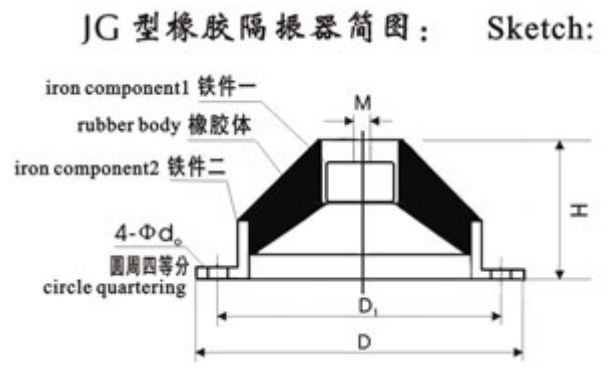


JG 型橡胶剪切隔振器 JG rubber shearing vibration absorber

JG 型橡胶剪切隔振器是由内、外钢套和中间的合成橡胶组 成，经硫化呈中空圆锥体，橡胶部份受剪切力，具有较大的变 形范围和较低的固有频率。工作温度范围在-15℃~+80℃。温 度变化时，刚度也有所变化：阻尼比 C / C。≥0.07。对于水 泵、压缩机、通风机、发电机组、冷冻机等机械设备的积极隔 振和仪器仪表的消极隔振都有良好的隔振效果。



posed of outer and inside steel sheath and synthetic rubber in the middle. It is hollow cone after being vulcanized. It is the rubber parts that bears the shear. This type has wide distortion scope and low intrinsic frequency. Working temperature ranges from -15℃ to 80℃. Rigidity changes as the tempera-ture fluctuates. Damp ratio is great and equal than 0.07 . It plays an important role in vibration insulating positively of mechanical equipment like water pump, compressor, ventilator, dynamo, refrigerator and vibration insulating passively for instru-ment and apparatus.

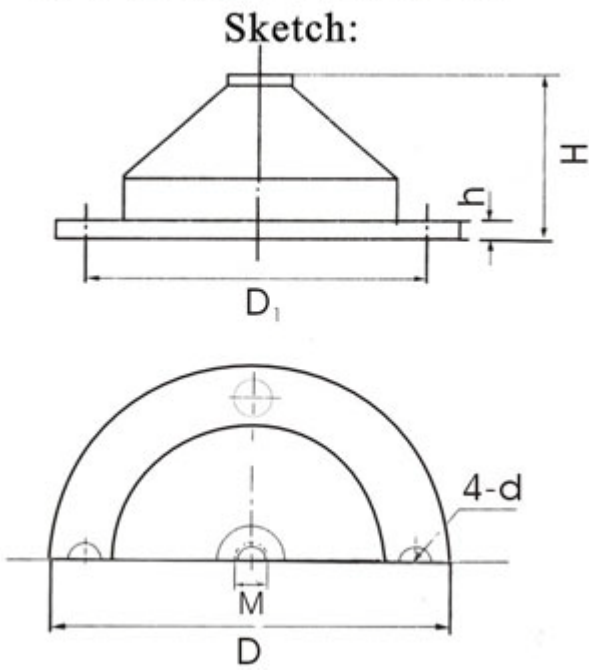
型号 Type	外形尺寸 figure dimension					额定荷载 最小-最大 (kg) rating load	刚度 (kg/cm) rigidity	变形 (mm) distortion	固有频率 (Hz) intrinsic frequency	最佳荷载 (kg) rating load
	M	D	D <sub>1</sub>	H	d0					
JG1-1	M10	100	80	43	8.5	5-15	20	2-18	8-14	10
JG1-2	M10	100	80	43	8.5	10-30	36			20
JG2-1	M12	150	120	55	12	20-60	60	4-12	7-12	40
JG2-2	M12	150	120	55	12	40-120	90			80
JG3-1	M16	200	170	87	12.5	80-240	120	5-16	6-11	160
JG3-2	M16	200	170	87	12.5	160-480	200			320
JG4-1	M20	200	170	100	16	320-960	300	8-24	5-9	640
JG4-2	M20	200	170	100	16	640-1920	650			1280

JSD 型低频橡胶隔振器 JSD low frequency rubber vibration absorber

JSD 型低频橡胶隔振器是由金属和橡胶复合制成，表面全部包覆橡胶，可防止金 属锈蚀。额定载荷下固有频率为国内务型号橡胶隔振器中最低，适宜于转速大于 600 JSD of low frequ-ency rubber

转 / 分的风机、水泵、空压机、制冷机等动力机械的基础隔振降噪，尤其适用于立式 vibration absorber Surface is 水泵的基础隔振，详见《立式水泵隔振及其安装》，国家标准图 95SS658；等频性 covered with rubber, so it can 好，当大于额定载荷后，隔振器的固有频率保持不变；阻尼比大，对共振峰的抑制能 resist corrosion. It has the 力强；结构简单、安装方便，可直接安装在机座下，同时也可用地基螺栓固定安装， lowest intrinsic frequency under 使用安全可靠，十四种规格，六种外形尺寸，载荷范围为 30N~25000N，耐油、海 rating load among various types of 水、盐、雾禾口日照等，适用于一 25~+117℃温度范围。载荷范围为额定载荷上下 rubber vibration absorber in dom- 50%。 estic. It is suitable for

JSD 型橡胶隔振器简图：



revolution velocity of power engine which is greater than 600 rpm like fan engine, water pump, air compressor and refriger-ator, is useful specially to basic vibration insul-ating for vertical water pump, Detailed information can refer to vibration insulating and installment of the vertical water pump, national standard graph 95SS658. It has good capability of equal frequency. Its intrinsic frequency is constant when the load is greater than rating load. It has large damp ratio. can control formant effectively. With simple structure, it can be installed

under the engine base or fixed with base bolt, is safe and reliable. There are 14 specifications, 6 figure dimensions. Load scope is 30N to 25000N. Resisting to grease, sea water, salt, fog and sunlight, its working temperature is -25℃ to 117℃, load scope is above and blew 50% of the rating load.

型号 Type	额定载荷 (kg) rating load	静态变形 (mm) static distortion	固有频率 (Hz) intrinsic frequency	阻尼比 (C/Cc) damp ratio	M	D	D <sub>1</sub>	H	h	d
JSD-1	3-10	6-15	5-7.5	>0.07	8	90	70	43	7	8.5
JSD-2	8-15	6-15	5-7.5	>0.07	10	140	120	63	7	8.5
JSD-30	15-30	6-15	5-7.5	>0.07	12	150	120	55	9	12
JSD-50	25-50	6-15	5-7.5	>0.07	12	150	120	55	9	12
JSD-85	50-85	6-15	5-7.5	>0.07	14	200	170	75	9	12
JSD-120	85-120	6-15	5-7.5	>0.07	14	200	170	75	9	12
JSD-150	110-150	6-15	5-7.5	>0.07	16	200	170	85	9	14
JSD-210	150-210	6-15	5-7.5	>0.07	16	200	170	85	9	14
JSD-330	210-330	6-15	5-7.5	>0.07	18	200	170	95	9	14
JSD-530	330-530	6-15	5-7.5	>0.07	18	200	170	95	9	14
JSD-650	530-650	6-15	5-7.5	>0.07	20	200	170	100	9	14
JSD-850	650-850	6-15	5-7.5	>0.07	20	200	170	100	9	14
JSD-1250	850-1250	6-15	5-7.5	>0.07	20	200	170	100	9	14
JSD-1800	1250-1800	6-15	5-7.5	>0.07	20	200	170	100	9	14
JSD-2500	1800-2500	6-15	5-7.5	>0.07	20	200	170	100	9	14

其中 JSD-150、JSD-330、JSD-530 底部安装孔可改为腰形二孔供选择。Mounting hole at the bottom of JSD-150, JSD-330, JSD-530 Can be changed to Kidney-shaped hole for the second choice.

