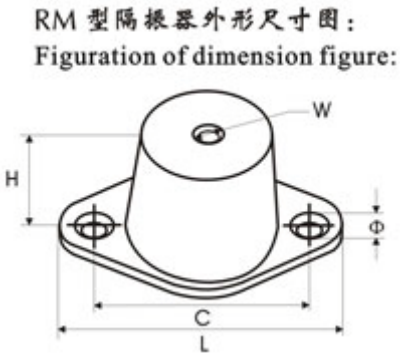


RM 型橡胶隔振器 RM rubber vibration absorber

RM 型橡胶隔振器，既有橡胶剪切的承压性能，又有过负荷保护的压缩性能，整体成型，上端有螺纹安装孔，下端有防滑底板，所有金属件有氯丁橡胶覆盖，防腐。这种橡胶隔振器适用于减少噪声和高频率振动场所，多用于转速大于 480 转/分的风机，立式卧式水泵，冷水机组、空压机等隔振降噪。

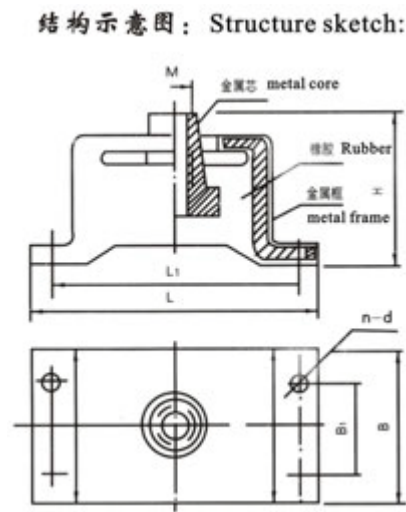
型号 Type	荷载范围 (N) load scope	基本尺寸 (mm) basic dimension				
		C	L	H	W	Φ
RM-30	100-500	60	80	35	M8	Φ 9
RM-60	200-1000	76	100	43	M10	Φ 9
RM-120	600-2000	76	100	43	M10	Φ 9
RM-240	1000-3600	105	140	73	M12	Φ 14
RM-480	2000-4000	105	140	73	M12	Φ 14
RM-1000	5000-15000	165	220	60	M16	Φ 15
RM-2000	10000-30000	165	220	60	M16	Φ 15



BE 型橡胶隔振器 BE rubber vibration absorber

BE 型橡胶隔振器由金属与橡胶复合制成，金属表面全部包复橡胶，能防止金属锈蚀。产品固有频率低，阻尼比适宜，横向刚度高于垂向刚度，适用平置、倒置及侧挂等多种安装形式。平置使用时，横向稳定性好。当承受较大冲击时，可自动限位保护，同时对共振峰的抑制能力很强，对瞬态冲击响应瞬时过度工况等引起的自振能迅速消失，设备不致出现任何晃动。该产品在较宽的干扰频率范围内有相当明显的

隔振效果，能适用于各 类陆地、船用机械设备，如柴油接收 strong impact. At the same time, it has a 油机、风机、水泵、空压机、空调机、精密仪器仪表 powerful control capability over formant, over response 等中、小型机械设备的隔振。对有水平扰力的机械设 caus-ed by an instantaneous impact, and spontaneous 备，使用本隔振器能取得良好的隔振效果。 Vibration caused by instantaneous overload can be eliminated



quickly. Thus, equipment will not shake. It has remarkable vibration insulating effect in the wide disturbing frequency, can be applied to medium and small-sized terrestrial and ship mechanical equi-pments, such as diesel, fan engine, water pump, air compressor, air-conditioning and precise instrument and apparatus. Vibration insulating effs-ct of this type of vibration absorber is excellent even if there exist horizontal disturbing forces.

外形安装尺寸及技术状态图： Figure install dimension and technological state graph:

型号 Type	M	H	L	L ₁	B	B ₁	d	n	额定荷载 (N) rating load	固有频率 (Hz) intrinsic frequency	静变形(mm) static distortion
BE — 10	8	40	70	54	36	/	7	2	100	10±2	≤4
BE — 15	8	40	70	54	36	/	7	2	150	10i2	≤4
BE — 25	8	40	70	54	40	/	7	2	250	10±2	≤4
BE — 40	10	46	85	68	55	/	9	2	400	10±2	≤4
BE — 60	12	50	100	80	65	/	9	2	600	10i2	≤4
BE — 85	14	60	120	100	70	/	11	2	850	10±2	≤5
BE — 120	16	60	140	112	85	/	13	2	1200	10±2	≤5

BE — 160	18	62	145	115	90	/	13	2	1600	10 ± 2	≤ 5
BE — 220	22	70	150	120	105	/	15	2	2200	10 ± 2	≤ 5
BE — 300	24	75	155	125	110	60	15	4	3000	10 ± 2	≤ 5
BE — 400	27	80	75	140	120	65	17	4	4000	10 ± 2	≤ 5
BE — 600	27	80	175	140	120	65	17	4	6000	10 ± 2	≤ 5