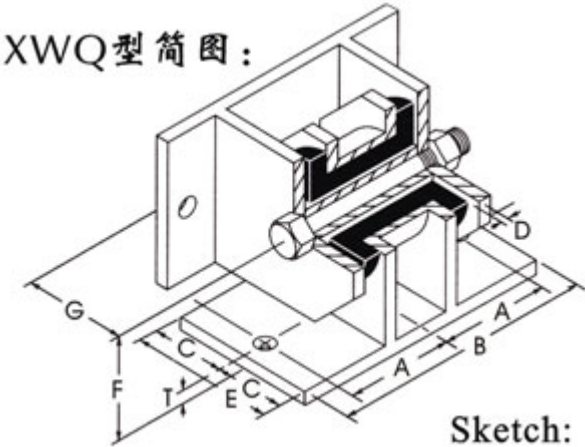


XWQ 型隔振台座限位器 XWQ vibration isolation dado restrictor

XWQ 型隔振台座限位器由带铰链机构的钢板与橡胶组成，主要针对高层建筑内水泵开启与关闭时台面振幅较大，容易引起管路错位爆裂而设计的，具有性能稳定，价格便宜等优点，现已广泛使用于需要限位的动力设备中。



plant with hinge and rubber. It is designed for large swing of table board when the water pump is on or off in the high buildings, which will result in the pipeline dislocation. It has stable performance and cheap price. It has been widely used in power equipments to which the restrictor is needed.

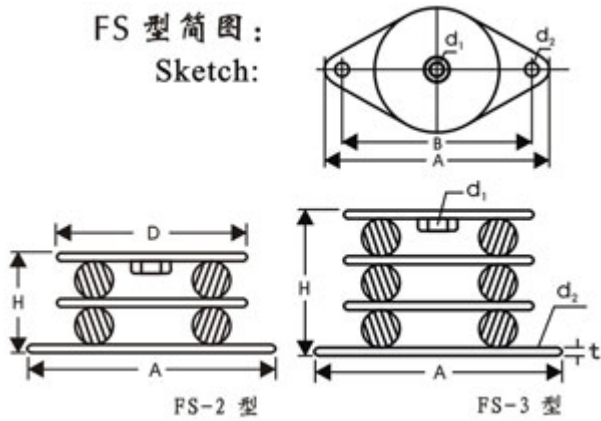
XWQ 型技术特性表 Technological characteristic table

规格 Specification	承载范围(kg) load scope	A	B	C	D	E	F	G	T
XWQ-500	0-500	80	200	40	14	80	80	65	8
XWQ-1000	500-1000								
XWQ-2000	1000-2000	120	320	65	20	130	130	120	14
XWQ-4500	2000-4500								
XWQ-9800	4500-9800	180	400	110	36	220	220	200	26
XWQ-20000	9800-20000								

FS 型环形橡胶隔振器 FS ringy rubbervibrationabsorber

FS 型环形橡胶隔振器由上下钢板，中间环状橡胶块组成，分二层、三层，自振频率低，性能稳定，适用于水泵、风机、压缩机等动力设备隔振。

FS ringy rubber vibration absorber is composed of top and bottom steel plate and ringy rubber block in the middle. It has two-layer and three-



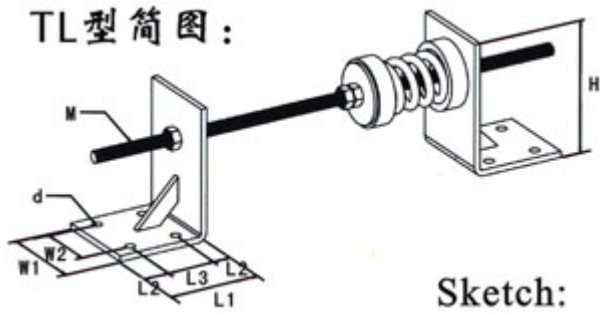
layer series, has low intrinsic vibration frequency and stable performance, is effective in vibration absorbing for power equipment, such as water pump, fan engine and compressor.

FXG 型技术特性表 Technological characteristic table

规格 Specification	承载范围 (kg) load scope	最大变形 (mm) distortion scope	自振频率 (HZ) intrinsic vibration frequency	D	H	A	B	d1	d2	t
FS-2-60	30-80	9	7	60	35	105	83	M8	11	2.5
FS-3-60	30-80	13	6	60	51	105	83	M8	11	2.5
FS-2-80	60-150	11	6.3	80	47	140	110	M10	13	3
FS-3-80	60-150	15	5.1	80	65	140	110	M10	13	3
FS-2-120	120-300	18	5	120	67	210	165	M12	15	3
FS-3-120	120-300	27	4	120	98	210	165	M12	15	3
FS-2-160	280-700	25	4.4	160	86	280	220	M16	19	4.5
FS-3-160	280-700	39	3.5	160	126	280	220	M16	19	4.5

TL 型推力限位器 TLthrust restrictor

TL 型推力限位器是由一弹簧组件与橡胶隔振消声垫串联组成，它可在厂内预校准其推力以及在工地上作进一步调校，令其在开始工作和停止工作之间有一定的移动距离，一般控制在最大 8mm 的位移量，可在水平和垂直方向作限位使用。



the product can be preliminary adjusted in the factory and further adjusted on building site. It should keep a certain moving distance between starting and ending work. Under normal condition, the maximum moving distance should be less than 8mm by

horizontal and vertical restricted using.

T L 型技术特性表 Technological characteristic table

规格 Specification	最大推力 N maximum thrust	变形 (mm) Distortion	刚度 N/mm Rigidity	H	W1	W2	L1	L2	L3	M	d
TL-30	300	25	12	130	110	70	130	30	70	M12	Φ 13
TL-70	700	25	27	130	110	70	130	30	70	M12	Φ 13
TL-150	1500	25	59	130	110	70	130	30	70	M12	Φ 13
TL-300	3000	25	118	130	110	70	130	30	70	M16	Φ 13
TL-500	5000	25	196	130	110	70	130	30	70	M16	Φ 13
TL-750	7500	25	294	130	110	70	130	30	70	M18	Φ 13
TL-1000	10000	25	392	130	110	70	130	30	70	M18	Φ 16
TL-1300	13000	25	540	130	110	70	130	30	70	M20	Φ 16
TL-1800	18000	25	720	130	110	70	130	30	70	M20	Φ 16