



SHANGHAI
RICHU COMPANY

“Evolution Through Innovation”

精密 切削刀具

“因创新而演变”

By Richu Tools



上海
日初工具

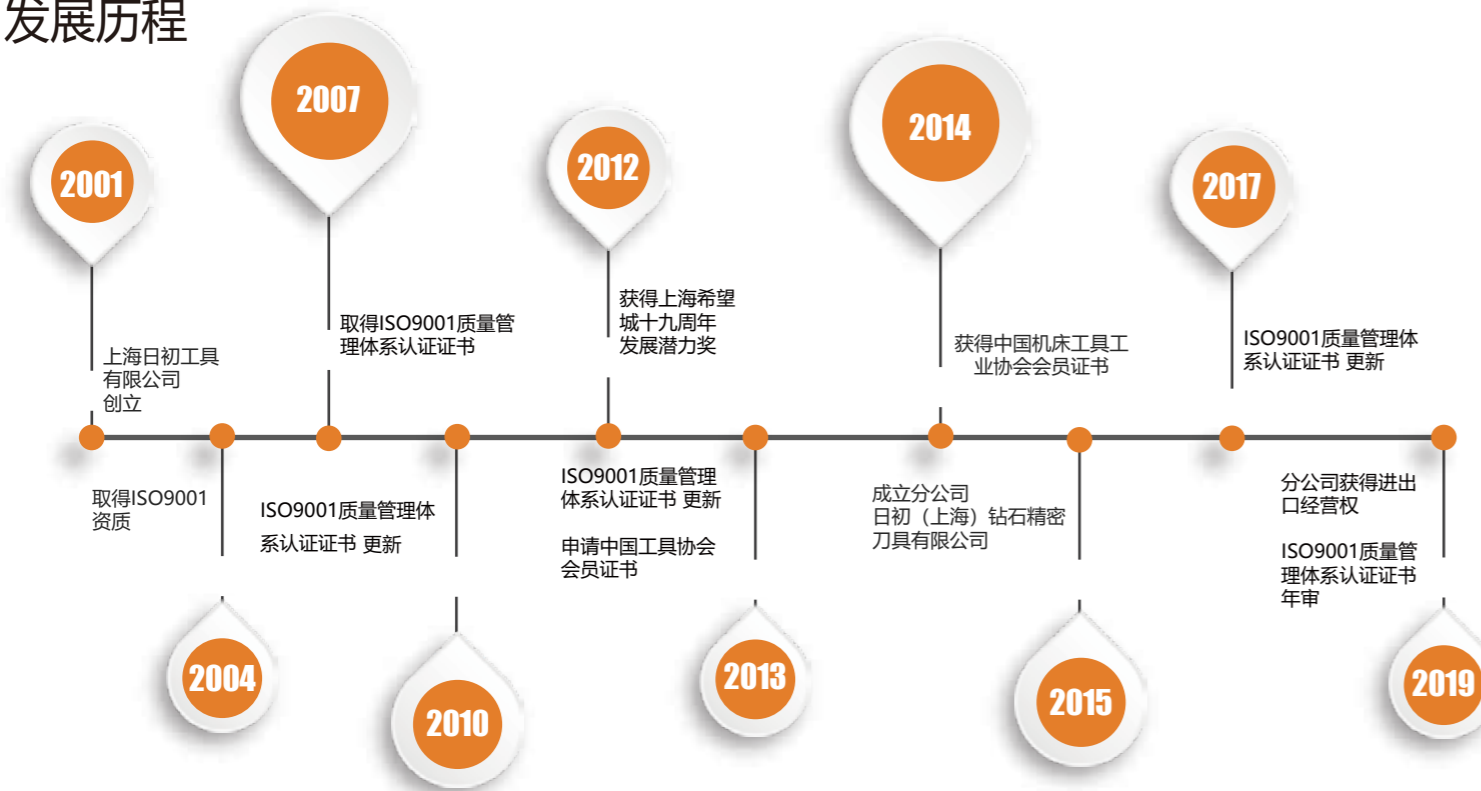
公司介绍

上海日初工具有限公司成立于2001年5月，拥有从德国、英国、日本、台湾等国引进的精良设备和先进的加工工艺及管理方法。日初的主要产品有各类标准及非标刀具，HSK刀柄，各类刀片、医疗刀具、刀具涂层、刀具修磨等。公司提供了对产品方案定制、刀具设计、制作、销售及售后等一系列专业服务来满足客户的各种需求。

Company Introduction

Shanghai Richu Tools Co., Ltd. was established in May 2001. It is equipped with advanced machinery imported from Germany, the UK, Japan, Taiwan and other countries, as well as sophisticated processing techniques and management methods. Richu's main products include various standard and non-standard tools, HSK tool holders, various inserts, medical tools, tool coatings, tool regrinding, etc. The company offers a series of professional services, including customized product solutions, tool design, manufacturing, sales and after-sales support, to meet the diverse needs of customers.

发展历程



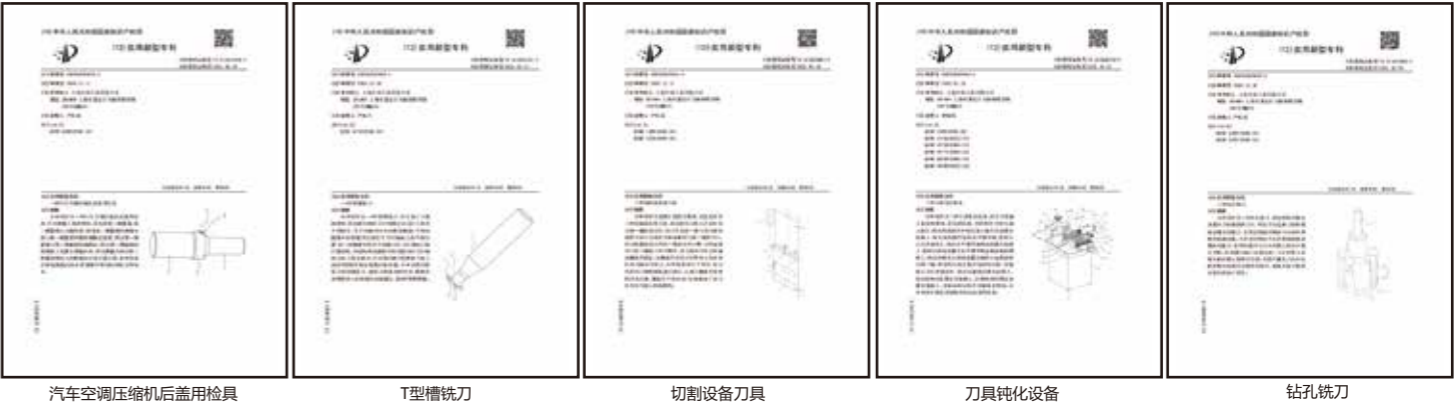
认证证书&专利荣誉

Certifications & Patents



ISO 9001:2015

- 内冷铰刀专利
- 汽车空调压缩机后盖用检具
- T型槽铣刀
- 切割设备用铣刀
- 刀具钝化设备
- 钻孔铣刀
- 刀具夹持装置
- 成型车刀
- 抗震刀杆刀具
- 外冷铰刀
- 便于拆装的切滚刀具
- 简易式钝化机
- 刀具加工夹具



目录 CONTENTS

PCD 刀具 / PCD TOOLS

变速器	5
电机壳	7
发动机缸盖	9
发动机缸体	11
转向器	13
涡旋盘	15

各类PCD刀具

定制化PCD成型刀	17
-----------------	----

整体硬质合金刀具

立铣刀	22
铰刀	22
麻花钻	23
抛光钻	24
割槽刀	25
成型刀	26

PCD/CBN 刀片

定制化PCD/CBN刀片	27
--------------------	----

设备&服务

设备信息	29
整体刀具服务	32
公司地址	34

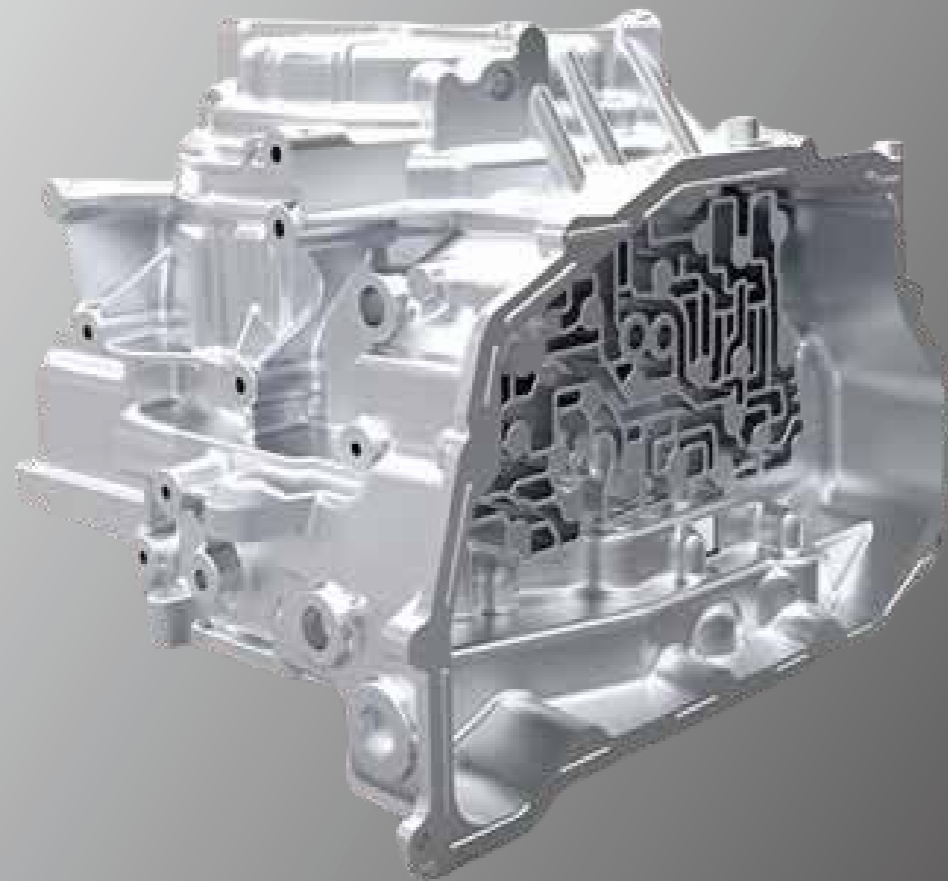
01

PCD
ROTATION
TOOLS

PCD
旋转
刀具

变速器加工

Transmission Machining



变速器加工



PCD玉米铣刀
PCD Corn Milling



PCD 阶梯孔铰刀
PCD Stepped Hole Reamer



PCD 阶梯孔铰刀
PCD Stepped Hole Reamer



PCD 装配孔铰刀
PCD Installation Hole Reamer

PCD Tools For Transmission Machining

电机壳加工

Motor Housing Machining



电机壳加工



PCD 密齿铰刀
PCD Dense Tooth Reamer



PCD 铰刀
PCD Reamer



PCD 阶梯孔铣刀
PCD Stepped Hole Milling



PCD 复合钻
PCD Composite Drill

发动机缸盖加工

Cylinder Head Machining



发动机缸盖加工



PCD 阶梯孔铰刀
PCD Stepped Hole Reamer



PCD 法兰铰刀
PCD Flange Reamer



PCD 球头铣刀
PCD Ball Nose Milling



PCD 齿条孔精铣刀
PCD Rack Hole Milling

PCD Tools For Cylinder Head Machining

发动机缸体加工

Cylinder Block Machining



PCD 面铣刀
PCD Face Milling Cutter



PCD 铣刀
PCD Milling Cutter



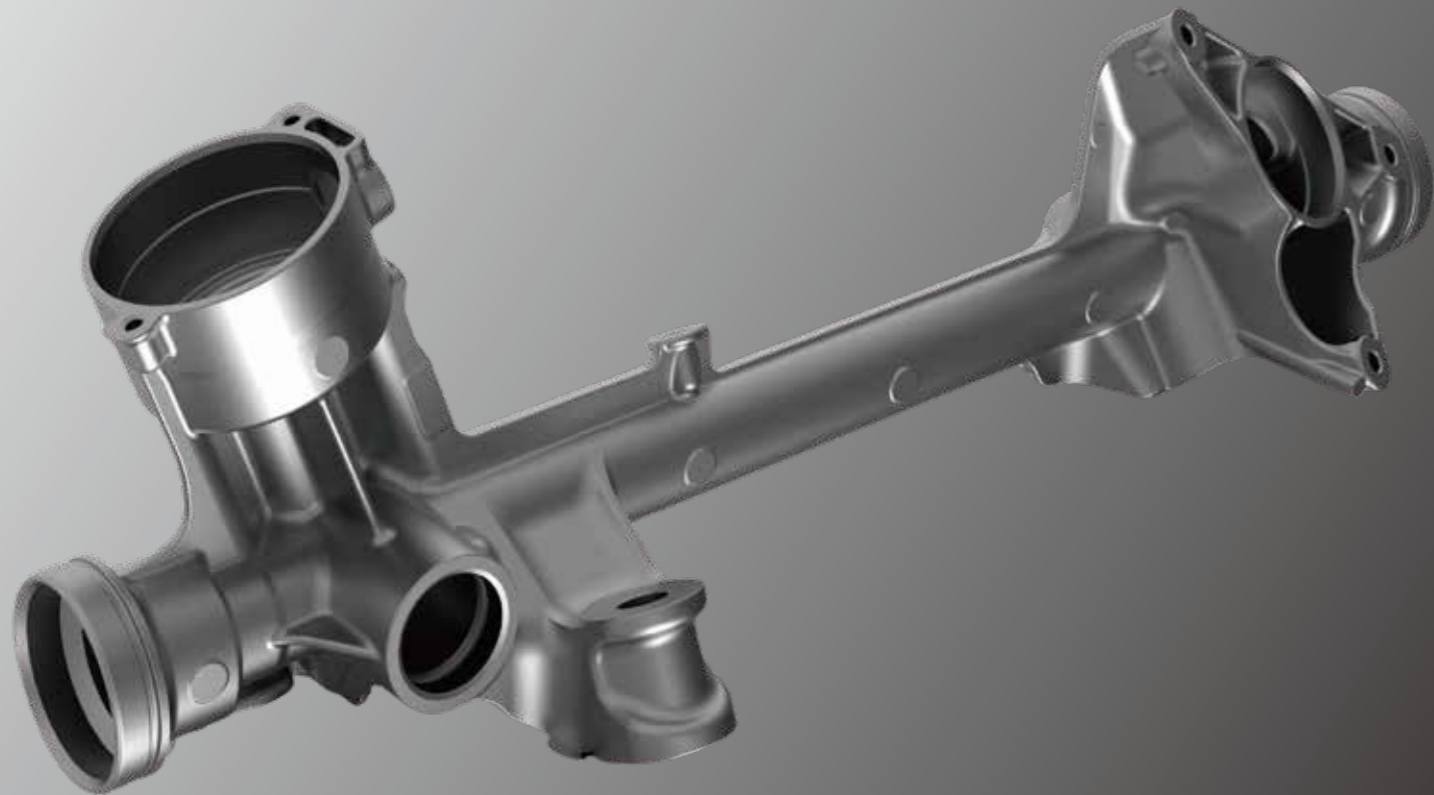
PCD正反一体铣刀
PCD Positive&Negative
Integrated Milling Cutter



PCD 导管孔铰刀
PCD Valve Guide Throat Hole
Reamer

转向器加工

Steering Gear Machining



转向器加工



PCD 螺纹铣刀
PCD Thread Milling Cutter



PCD 阶梯孔铰刀
PCD Stepped Hole Reamer



PCD 复合铰刀
PCD Milling&Reamer
Compound Tool



PCD 套筒铣刀
PCD Hole Sleeve Milling Cutter

涡旋盘加工

Scroll Plate Machining



PCD 铣刀
PCD Milling Cutter



PCD 铣刀
PCD Milling Cutter

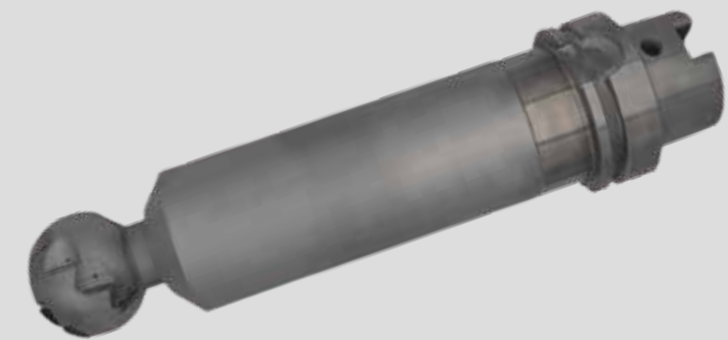


PCD 钻铰刀
PCD Drill Reamer

02

DIFFERENT
TYPE OF
PCD TOOLS

各类
PCD
刀具



“为您的加工需求量身定制的专用刀具”

“Specialized Tools, Designed for your Machining Needs”



03

**CEMENTED
CARBIDE
TOOLS**

**整体
硬质合金
刀具**

立铣刀 Endmills

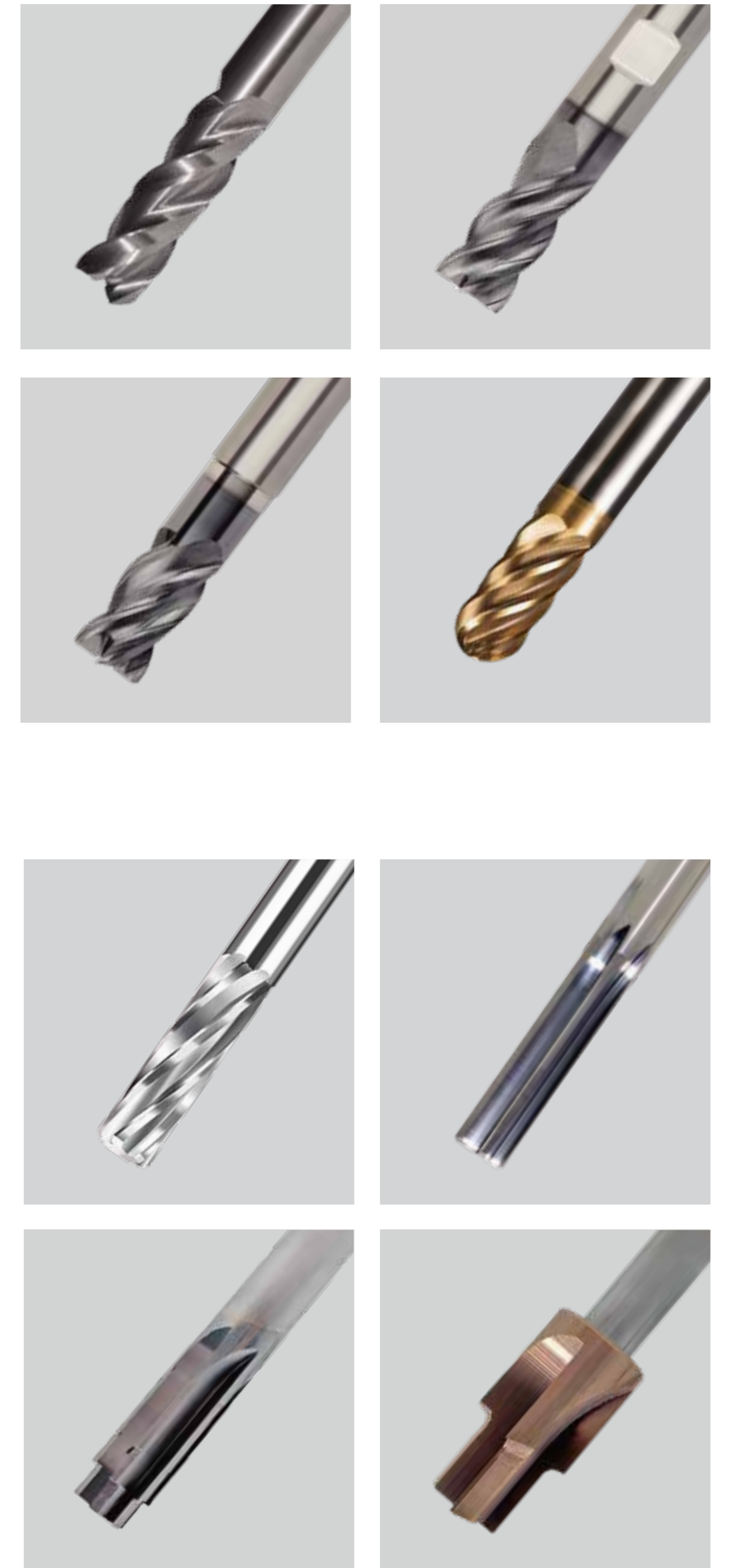
“立铣刀”是一种用于切削加工的旋转切削刀具，其切削刃分布在端部（底刃）和侧周（侧刃），可同时进行端面铣削、侧壁加工、开槽、轮廓雕刻等操作。立铣刀具有出色的耐用性和多功能性，因此在制造业中广泛应用，并作为提升加工效率和产品质量的关键工具。

“Endmill” is a rotating cutting tool used for machining, with cutting edges distributed on the end (bottom edge) and periphery (side edge). It can perform face milling, sidewall machining, grooving, contour engraving, and other operations simultaneously. Known for its excellent durability and versatility, the endmill is widely used in manufacturing and serves as a key tool for improving machining efficiency and product quality.

铰刀 Reamer

“铰刀”是一种用于精加工孔壁的多刃刀具，通过旋转切削对预钻孔（如钻头或粗镗后的孔）进行微米级精度修整，提高孔的尺寸精度、圆度和表面光洁度。其在金属加工中表现尤为出色，凭借高精度显著提升加工的准确性和成品质量。

“Reamer” is a multi-blade cutting tool used for precision finishing of pre-drilled holes (such as those made by drills or rough boring). Through rotary cutting, it achieves micron-level accuracy in improving hole dimensions, roundness, and surface finish. Particularly outstanding in metalworking, reamers significantly enhance machining accuracy and product quality due to their high precision.



麻花钻 Twist Drill

“麻花钻”最常见的钻孔刀具，其螺旋槽形似“麻花”。它通过旋转切削在金属、木材、塑料等材料上加工圆柱形孔，是机械加工中的基础工具。麻花钻也实现了精度与性能的完美结合，螺旋槽设计能轻松切削钢材并且减少摩擦与热量积聚，延长寿命提高加工效率。

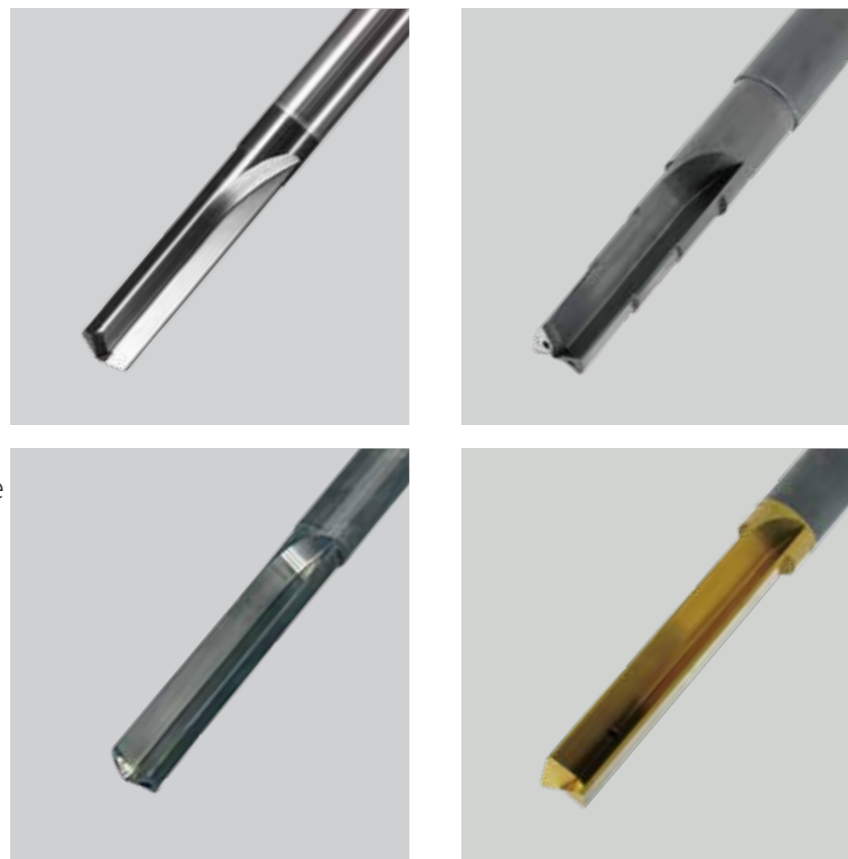
"Twist Drill" named for its spiral flutes resembling a "twisted rope," is the most widely used tool for creating cylindrical holes in metals, wood, plastics, and other materials. As a fundamental tool in mechanical machining, it achieves an optimal balance of precision and performance. Its spiral flute design enables efficient cutting of steel while reducing friction and heat buildup, thereby extending tool life and improving machining efficiency.



抛光钻 Burnishing Drill

“抛光钻”主要用于钻孔后的表面抛光，以提高孔壁的光洁度、尺寸精度和机械性能。它结合了钻孔的抛光的功能，适用于精密制造、模具加工、航空航天等领域。

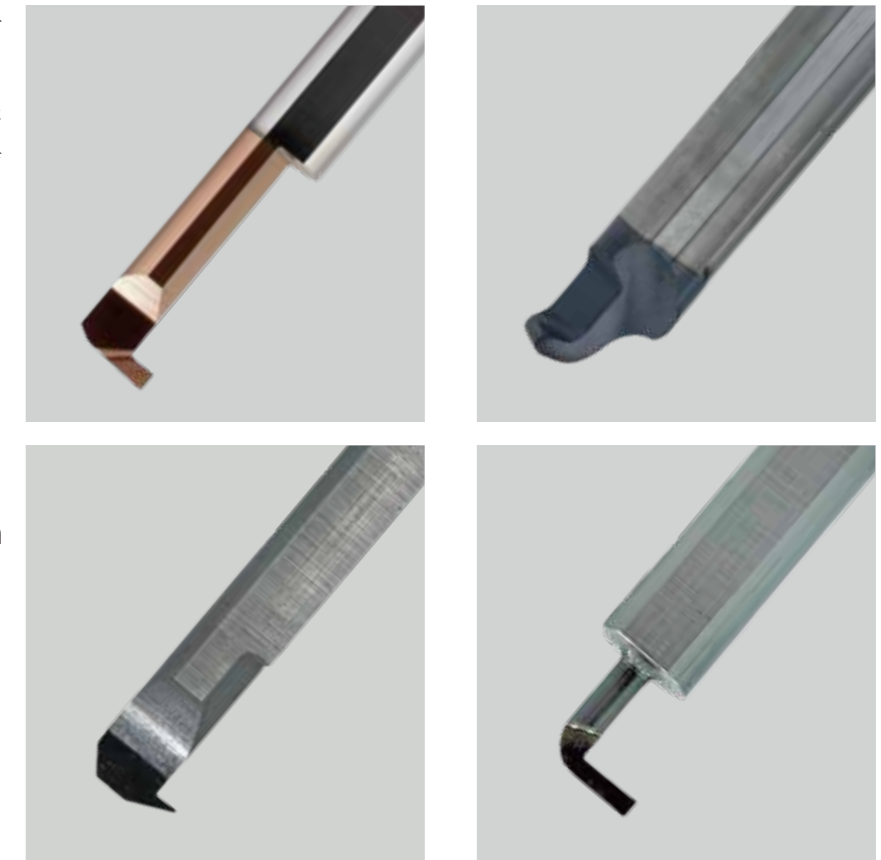
"Polishing Drill" is primarily used for post-drilling surface finishing to enhance hole wall smoothness, dimensional accuracy, and mechanical properties. Combining drilling and polishing functions, it is ideal for precision manufacturing, mold processing, aerospace applications, and other high-tolerance fields.



割槽刀 Grooving Cutter

“割槽刀”是一种用于在工件表面切削沟槽、凹槽或切断材料的专用切削工具。其核心功能是高效、精准地加工各种槽型结构，如退刀槽、密封槽、油槽等。

"Grooving Cutter" is a dedicated cutting implement designed for machining grooves, recesses, or material separation on workpiece surfaces. Its primary function lies in efficiently and precisely processing various groove configurations including relief grooves, sealing grooves, oil grooves, and similar structural features.



成型刀 Form Tool

“成型刀”是一种通过刀具轮廓直接复制出特定形状的专用切削工具，能够一次性加工出复杂型面，显著提高生产效率和形状精度。这类刀具广泛应用于批量加工固有固定几何形状的零件。可确保精密加工的可靠性和一致性。

"Form Tool" is a dedicated cutting implement that replicates specific shapes directly through its contour profile. Capable of machining complex surfaces in a single operation, it significantly enhances production efficiency and shape accuracy. This category of cutting tools is widely used for batch processing of parts with fixed geometric configurations, ensuring both machining reliability and dimensional consistency.



“为您的加工需求量身定制的专用刀具”



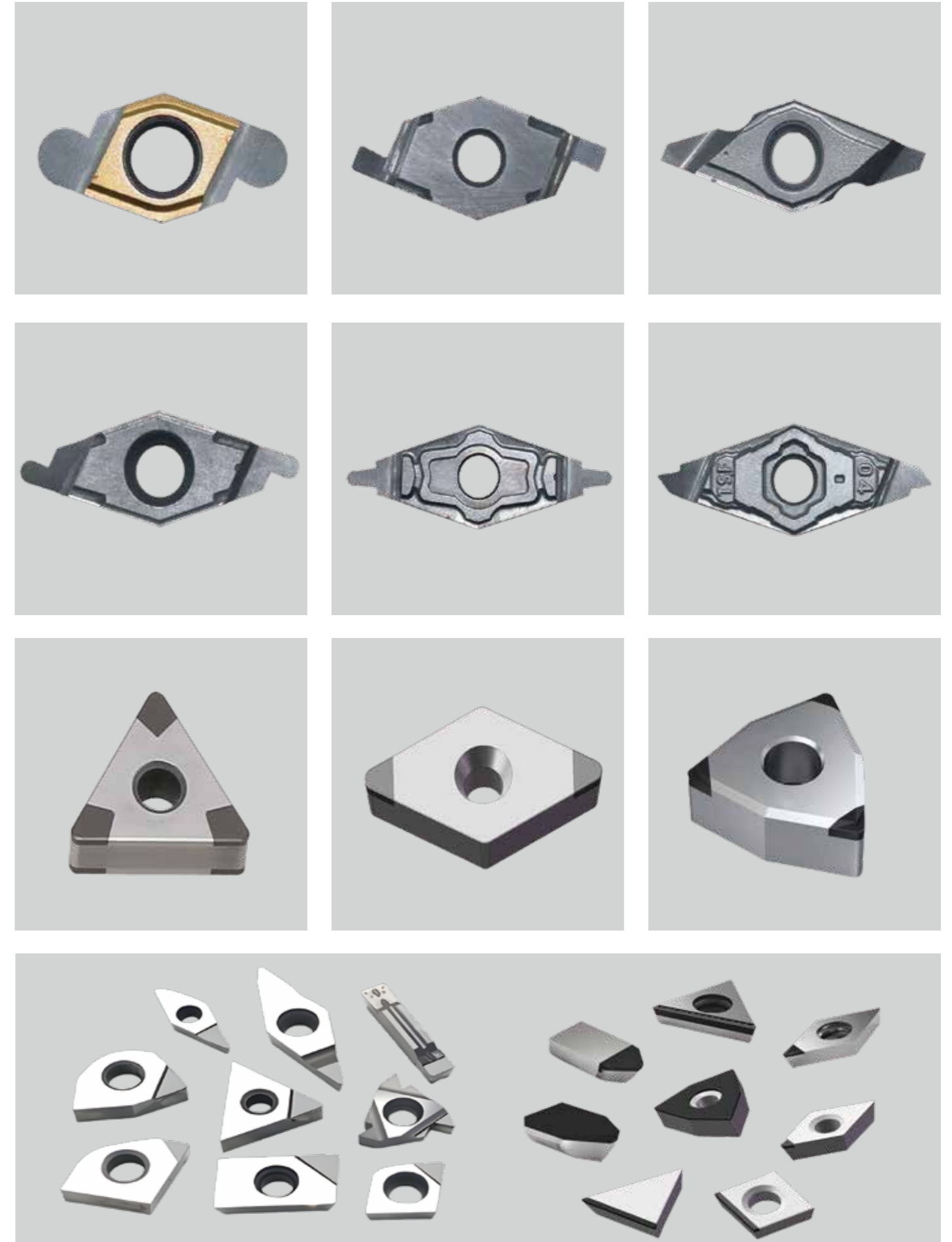
“Specialized Tools, Designed for your Machining Needs”



04

PCD
CBN
INSERT

PCD
CBN
刀片



05

EQUIPMENT
&
SERVICE

设备
&
服务



设备信息



整体刀具服务

Total Tooling Service



整体刀具服务

Total Tooling Service

我们在刀具应用的每一个阶段与您携手同行，
提供提升效率、保障质量并支持长期发展的整体解决方案。

We partner with you through every stage of your tooling process of-
fering solutions that boost productivity, ensure quality, and support
long-term success.



如何到达这里

Map&Directions



Contact Us

上海日初工具有限公司

上海市嘉定区马陆镇敬学路188号
电话 +86 39908766
邮箱 srrc@shrichu.com

SRRC COMPANY

188 Jinxue Road, Malu Town,
Jiading District, Shanghai, China
TEL +86 39908766
E-MAIL srrc@shrichu.com